

# SHOOT

LIKE IT'S THE 21st CENTURY

# 2022



MADE IN NORWAY



## DESIGNED TO ADAPT

YTRE HAUGEN 75 / N-6763 HORNINDAL / NORWAY  
GRS@GRSRIFLESTOCKS.COM / +47 57 87 96 50

# INDEX:

- 3 Support
- 4 Who we are

## GRS RIFLE STOCKS:

- 6 Fenris
- 8 Bifrost
- 10 Warg
- 14 Ragnarok
- 16 Laminate colours
- 18 Hunter Light
- 20 Sporter
- 22 Hybrid
- 24 Blank stocks

## GRS EXTRA OPTIONS:

- 26 GRS Bipod
- 27 GRS Arca-Rail
- 28 GRS spigot
- 29 Spigot Adapter for Picatinny Rail
- 30 1" GRS Limbsaver Airtech Recoil pad
- 30 GRS height Adjustable recoil pad
- 31 GRS Rearbags

## BITS AND BOBS:

- 32 Newsletter
- 32 Social media
- 33 Maintenance
- 33 Assembling
- 33 Glass bedding
- 33 Warranty
- 34 A word from our users





Built with precision and cutting edge technology. Blended by creativity and innovative design. These are components that make our rifle stocks fit. It is simple, yet unique.

GRS is fueled by a passionate team of hunters and shooters. This passion inspires us to create what we believe are the best rifle stocks on the market.

OSCAR HAUGEN, CEO / PRESIDENT

## SUPPORT

Normal support and inquiries should be addressed to your local GRS dealer or distributor first. In case they do not have the answers you need, please feel free to contact us directly.

## CONTACT GRS

GRS Riflestocks AS  
Ytre Haugen, NO-6763 Hornindal  
Norway

Phone: +47 57 87 96 50  
[grs@grsriflestocks.com](mailto:grs@grsriflestocks.com)

Opening Hours:  
8 AM to 4 PM  
(Central European Time)  
Monday through Friday



# Who we are

*GRS Riflestocks is driven by entrepreneur-ship and innovation, creating unique rifle stocks that fit and feel right. That's right.*

They say children learn to smile from their parents. Values and attitudes are often transferred between generations, and like many other Norwegian companies, GRS is a result of a family business with long traditions.

It all started in 1983, when our parents established Grodås Møbler – a production company specialised on furniture. A passion for craftsmanship infused

*"We took what we had - field experience and CNC machining expertise along with a good portion of guts, and we never looked back. We craved success by hard work."*

the walls, with a hard-line focus on quality. This led to rapid growth in short time.

As young kids we worked in the factory nearly every day after school. We were taught the skills of young entrepreneurs. The skill of craftsmanship. Learning to work hard, taking nothing for granted.

Although chairs and sofas are all fine, our true passion was always shooting and hunting. When Håvard bought his first guns and ammo magazine in 1985, we read eagerly. This sparked the interest for the weapons industry further.

After his graduation, Håvard started to work with CNC programming and machining. This was a eye opener that gave us almost limitless possibilities. Imagine having the ability to take an idea and make it into a product – it was simply amazing. Håvard's brilliant mind on R&D and development was soon to be combined with Oscar's field experience and business sense.

Oscar worked outside the company for a couple of years after graduating in 1997. In 2000 he joined the Norwegian Army on mandatory service for one year. After the mandatory year, he was enrolled in the Norwegian National guard – where he immediately started in the specialist branch. Being with the QRF sharpshooters for 3 years, and working as a QRF sharpshooter Team leader for 7 years, he developed his skills and experience. When his contract ended, he took over as CEO and part owner in March 2010.

But times were tough. From 2008 to 2010, the company's history could be summarised with

one word: crisis. The Norwegian furniture market crashed during the financial crisis, and we needed a new approach to survive.

Luckily, we still had the CNC machines and our staff to help us. So, we took what we had of field experience and CNC machining expertise and created something new. Along with a good portion of guts, we launched our first rifle stock – and we never looked back. We craved success by hard work and lots and lots of travelling, on a mission to keep the company alive.

From that point, GRS was established and trademarked in 2011.

Our first stock hit a nerve. Both the industry and our customers saw our stocks for what they were – they simply made people shoot better. The word spread quickly online and in social media, and soon we were shipping to every corner of the world. During that time, we worked night and day to establish our distribution network.

Today we can have a laugh about it, as we are represented in 45 countries around the world. And the GRS brand is globally recognised as an innovative premium brand.

This is a position we intend to keep. We travel more than ever to visit our distributors and follow up new customers. We have become a staff of 26 passionate employees and the growth is healthy. And we smile every day knowing that more hunters and shooters will get to know GRS.

We make people shoot more accurately because the rifles fit better. What more could we ask for? And maybe we haven't seen nothing yet.

# GRS Fenris

## The easy way to improve your shooting

The Fenris is a great value, adjustable stock with a super strong body made with reinforced fiberglass. Whatever your aim at, Fenris is versatile enough to handle it. The stealth grey color blends with the black details and makes the stock equally esthetic as functional when merging into the surroundings.

Designed to work with all body types and clothing, it provides the accuracy and confidence to hit your target. This heavy hitter knocks out standard stocks with its gritty composition and top-tier ergonomics. The honeycomb grip stands out in appearance and performance with a superior look and non-slip, vibration dampening design.

- Low maintenance synthetic materials
- Adjustable LOP and cheekpiece for faster and more accurate shots
- Ergonomic honeycomb grip for better recoil absorption
- Bedding is installed as a standard to prevent flexing and reduce movement
- Prepared to fit a height adjustable recoil pad to be added for prone shooting
- Perfect for varmint hunting, driven hunts and competitions

What's in the box? Stock, QD Sling Swivels and GRS Decals.



NEW

#### SPECIFICATIONS FENRIS

Fiberglass reinforced body

GRS SpeedLock adjustment

LOP 13,1-14,2 in [33,5-36,3 cm]

0.5" GRS Limbsaver Airttech recoil pad

Total length 29,7 in, 75,5 cm

Forend width 2,28 in, 58 mm

Weight 3,0 lb, 1400 grams

No bedding required

Pillar bedding installed

Flush cup sling mounts and push button sling loops

One sling mount on the front for mounting bipods

Optional extra feature: Height adjustable recoil pad









# GRS Bifrost

## Unlock the power of ultimate adjustability

The Bifrost is our most adjustable and lightweight composite stock. Rugged and weatherproof with an ergonomic grip and fore-end that give you full control over your rifle in any condition.

This stock has a height and canting adjustable recoil pad as standard and it is spigot ready. Picatinny rails, flush cups, QD sling mounts, bipod sling stud installed, you name it. This is truly the ultimate in our fiberglass composite rifle stocks.

- Low maintenance synthetic materials
- Adjustable LOP and cheekpiece for faster and more accurate shots
- Ergonomic rubber grips
- Canting and height adjustable recoil pad
- Perfect for stalking, long range hunting and competition

What's in the box? Stock, QD Sling Swivels, Picatinny Rail and GRS Decals

## SPECIFICATIONS BIFROST

Fiberglass reinforced body

GRS SpeedLock II adjustment system

LOP 13,7-14,9 in, 35-38 cm

0.5" GRS Limbsaver Airtech recoil pad

Total length 31,5 in, 80,0 cm  
(depending on system inlet)

Forend width 2,24 in, 57 mm

Weight 2,9 lb, 1350 grams

No bedding required

Flush cup sling mounts and push button sling loops

One sling mount on the front for mounting bipods

Canting of recoil pad in 5° increments

Prepared for mounting Picatinny rails

2 Picatinny rails included

2 pcs. quick detachable flush cup sling mounts

Recommended torque settings 5.2 nm



GRS WARG:

A stock that will make  
your heart beat faster.







## BACK STORY:

The GRS Warg was developed as a natural next step from the Bifrost - for the shooters who need a rail for front-mounted nightvision, thermal imaging equipment - or any other applications utilizing a top rail.

In the GRS Warg, you can also have the option of adding our new GRS top-mounted bipod for any other brand bipods produced with a Picatinny rail/top mount configuration. The

sides and bottom of the tube are designed to accept all available M-Lok accessories.

The GRS Warg combines the previous inlets of the Bifrost with an aluminium tube-type forend which make it more suitable for tactical work - or pure shooting applications. The 80 mm longer tube forend - compared to the Bifrost - also gives an edge in stability as you can mount the bipod further forward on the rifle.





# GRS Warg

## Make a statement!

The GRS Warg stock gives you the best of two worlds.

Fully adjustable, & ergonomic, and the best features of a rigid chassis stock fore-end.

You can use our top-mounted GRS bipod, front mounted Night Vision, IR illuminators, - and more - thanks to its very adaptable M-Lok patterned aluminum fore-end. The GRS Warg is developed for the long range shooter and is one of our absolute favorites combined with a 338 Lapua rifle.

- Low maintenance synthetic materials
- Adjustable LOP and cheekpiece for faster and more accurate shots
- Ergonomic rubber grip
- M-Lok patterned aluminum fore-end
- Bedding is not required
- Perfect for long range, tactical and professional hunter

What's in the box? Stock, QD Sling Swivels and GRS Decals

## SPECIFICATIONS WARG

Fiberglass reinforced body

GRS SpeedLock II adjustment system

LOP 13,7-14,9 in, 35-38 cm

0.5" GRS Limbsaver Airtech recoil pad

Total length 31,7 in, 80,7 cm (depending on system inlet)

Forend width 1,65 in, 42 mm

Weight 2,9 lb, 1350 grams

No bedding required

Flush cup sling mounts and push button sling loops

One sling mount on the front stock

Canting of recoil pad in 5° increments

Prepared for mounting Picatinny rails

1 Picatinny rail included

2 pcs. quick detachable flush cup sling mounts

Recommended torque settings 5.2 nm







# GRS Ragnarok

**Ragnarok - the superior shooting platform from GRS.**

Take your Blaser R8 and R93 professional rifles to the next level. Fully adjustable to fit your rifle to your body. Prepared for using the GRS Arcarail and Bag Rider (sold separately) A hinged folding mechanism is standard for easy maintenance and transport. M-Lok forend so you can use the top-mounted GRS Bipod, front-mounted night vision, IR Illuminators, or to attach your Magneto speed chronograph.

The Ragnarok is a shooting machine!

- Low maintenance synthetic materials
- Adjustable LOP and cheekpiece for faster and more accurate shots
- Ambidextrous rubber grip
- M-Lok patterned aluminum fore-end
- Bedding is not required
- Perfect for long range, tactical and competition

What's in the box? Stock, QD Sling Swivels and GRS Decals

## SPECIFICATIONS RAGNAROK

6063 Anodized Aluminium body
GRS Speedlock II adjustment system
Hinge included
LOP 14,8-15,9 in (37,5-40,5 cm)
0.5 GRS Limbsaver Airtech recoil pad
Total length 34,8 in, 88,5 cm
Forend width 1,65 in, 42 mm
Weight 4,5 lb, 2036 grams
No bedding required
Flush cup sling mounts and sling loops included
Canting of recoil pad in 5° increments
Prepared for mounting Picatinny rails on the forend
1 Picatinny rail on the rear stock included
Recommended torque settings 5.5 nm



# Laminates

## INCLUDE

- Oiled finish\*
- 0.5" GRS Limbsaver recoil pad
- GRS SpeedLock adjustment
- Drop in inlet – glass bedding recommended



NORDIC WOLF



BROWN



GREEN MOUNTAIN CAMO



ROYAL JACARANDA



BLACK&GREEN



BLACK&ORANGE





NEW

# GRS Hunter Light

## Pack lighter, travel farther

The Hunter Light stock is 25% lighter than all other GRS laminate models.

A 5% scaled-down grip and length of pull make it our shortest and slimmest stock offering. The famous push-button cheek piece adjustment and the ergonomic grip are standard. You can increase the length of pull by adding 1cm spacers, so the stock is very adaptable. The LOP will be extended from 32,5 cm to 34,5 cm using both the included spacers.

The Hunter Light is a favorite amongst new hunters just getting into the sport and the alpine hunters looking for the lightest setup possible.

A perfect start to a hunting career - A stock that will grow with you.

- Adjustable cheekpiece for faster and more accurate shots
- Light weight and compact laminate stock
- Slimmer grip surfaces
- Standard barrel channel
- Perfect for alpine hunting, stalking, women, youth

What's in the box? Stock, Sling studs (installed). 2 pc spacers (installed) and GRS Decals.

## SPECIFICATIONS HUNTER LIGHT

Birch Laminate

GRS SpeedLock adjustment

LOP 12,8 in [32,5 cm up to 35,5 cm with spacers]

0.5" GRS Limbsaver Airtech recoil pad

Oiled finish

Total length 28,1 in, 71,5 cm

Forend width 1,81 in, 46 mm

Weights 2,3 lb, 1050 grams (+ - 10% depending on weapon inlet)

Glass bedding is recommended

Available in 6 colours

Standard barrel channel





# GRS Sporter

**Combine hunting and shooting**  
**- The ultimate allrounder**

All the adjustability and ergonomics you need to make your rifle fit you 100%. Get in the crosshairs faster!

This stock is favorite with hunters and competition shooters alike. Truly an all-rounder, and our all-time best-selling laminate model. Equipped with our famous SpeedLock adjustment system, and the ergonomic GRS grip. If you shoot prone or standing, we recommend adding the height-adjustable recoil pad option for added shooting comfort.

- Adjustable LOP and cheekpiece for faster and more accurate shots
- Prepared to fit a height adjustable recoil pad to be added for prone shooting
- Perfect for driven hunts, stalking and competition

What's in the box? Stock, Sling Studs (installed), and GRS Decals.

## SPECIFICATIONS SPORTER

Birch Laminate

GRS SpeedLock adjustment

LOP 13,1-14,2 in (33,5-36,3 cm)

0,5" GRS Limbsaver Airtech recoil pad

Oiled finish

Total length 29,9 in, 76,0 cm

Forend width 2,08 in, 53 mm

Weighs 3,0 lb, 1380 grams (+ - 10% depending on weapon inlet)

Glass bedding recommended

Available in 6 colours

Varmint barrel contour







# GRS Hybrid

**The Hybrid is a stock we designed for long range shooting.**

Push-button adjustments for length of pull, cheekpiece, and height-adjustable recoil pad option installed to make it a perfect shooting platform for long range. The way this stock transfers recoil is amazing, and the results speak for themselves.

A favorite with the South African Team Savage shooters and numerous F class FTR shooters worldwide.

We used this stock when we shot 2513 meters in our Kelbly Panda 338 Lapua with tremendous results.

- Adjustable LOP and cheekpiece for faster and more accurate shots
- Prepared to fit a height adjustable recoil pad to be added for prone shooting (included)
- Perfect for long range, F class FTR and competition

What's in the box? Stock, Sling Studs (installed), and GRS Decals.

## SPECIFICATIONS HYBRID

Birch Laminate

GRS SpeedLock adjustment

LOP 13,8-14,9 in (35-37,8 cm)

0.5" GRS Limbsaver Airtech recoil pad

Oiled finish

Total length 34,8 in, 88,5 cm

Forend width 2,32 in, 59 mm

Weight 3,5 lb, 1600 grams (+ - 10% depending on weapon inlet)

Glass bedding recommended

Available in 6 colours

Varmint barrel contour

Height adjustable recoilpad included

Comes with sling mount for easy bipod mounting



# GRS Blank Stocks

All GRS laminate models and colours can be purchased as blanks (not cut for an inlet). Blank stocks can be milled out individually for desired inlet by a **gun smith post purchase**. Here shown: GRS Sporter, black\*, RH, blank.



*Right*



*Left*



*Bottom*



*Top*

*\*) No longer available product color- black.*





# Extra options



## GRS Bipod

**There is no precision without steadiness. A Good bipod means a world of difference.**

Even though it was originally designed as a prone shooting, heavy duty top mount bipod for the Ragnarok chassis stock, the new GRS Bipod can also serve in other applications. It is built around a rugged design, is simple and functional to operate, and is also fitted to the GRS spigot with tighter tolerances than you would normally find in a spigot mounted bipod. It is adjustable from 220-315 mm - in 10 mm increments, and can be used top mounted in the forend underneath the barrel. The feet have two surfaces (clawed and smooth) easily changed by rotation. All adjustments are easily done via spring-loaded buttons - and rotation can be locked after levelling. The GRS Bipod is something we have always wanted to do, a sturdier platform for long-range and precision shooting.

The GRS bipod requires the use of our GRS spigot, which provides ease of use and ruggedness superior to the "universal fit". Our GRS spigots are readily available - with or without a Picatinny rail adapter.

Made from 6061 Aluminium and stainless-steel.





## GRS Arca-Rail

**The New GRS Arca-Rail kit makes the best of the standard to improve your shooting.**

As a new add-on for the Ragnarok chassis stock we now offer the GRS Arca-Rail kit which mounts to the underside of this stock's front end.

This rail can be used for tripod mount, attaching shooting bags, hand stops, barricade devices, bipods or any Arca-Rail standard equipment.

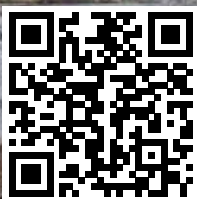
The rail is attached using two M-Lok fasteners in front (included), and four screws in the rear of the rail. These four screws replace the previous bolts that fixed the front end of the Ragnarok chassis stock. This means that when you use the GRS Arca-Rail you can later - if needed - remove the front end and the new Arca-rail as a unit - and without the need to disassemble both.

The GRS Arca-Rail is made of 6061 Aluminium and stainless-steel.





# Extra options



## GRS Spigot

**The spigot fits the original and Versa-Pod style attachment bipods. And it is easy to install.**

The GRS Spigot gives you easy to use detachable bipod mount, close to the core of the barrel. This will be giving you better control when shooting with bipods. Weights 61 grams (including screws).

Shoot straight!

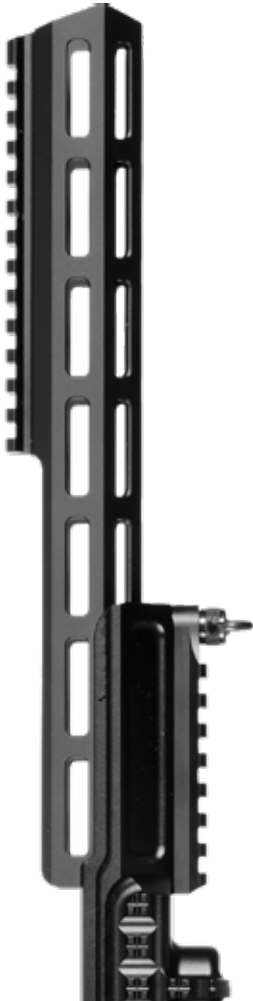
1. Open up the bolt hole where the fastening screw is to be mounted to 6mm.
2. Insert the spigot into the Bifrost stock with the stopper facing downwards, towards the ground.
3. Use the supplied short screw in the front Picatinny bolt hole to secure the spigot.
4. If you are using the Picatinny rail on the bottom front of the Bifrost stock, use the longer screw to secure the spigot.



# GRS Spigot Adapter for Picatinny Rail

The GRS Spigot to Picatinny rail adapter is here! An easy installation makes you able to use the GRS Spigot for VersaPod style bipods on your Picatinny railed forend.

You can use this adapter for both bottom and top mounted use. The adapter is made from 6063 anodized aluminium and weighs 96 grams (including screws).





# Extra options



## GRS Height Adjustable Recoil Pad

We continued our vision of ***no tools needed*** on the Height adjustable recoil pad option, the push button solution, **ready to be installed** on your existing GRS rifle stock or to come with your new GRS stock. The option is made in hard anodized aluminium with stainless steel springs and screws.

The **full adjustment** is 44mm from top to bottom and can be set in 4mm steps from zero to -16mm and +28mm.

The GRS height adjustable recoil pad is standard on the GRS Bifrost, GRS Bolthorn and GRS Hybrid.

## 1" GRS Limbsaver Airtech Recoil Pad

You can order your GRS rifle stock to come with 1" GRS Limbsaver Airtech recoil pad for a low additional cost. You may also easily mount post purchase. **Fits all models.**





## The best way to support shooting with bipods?

Add a GRS Rear bag under your stock! This is one of our bestsellers.

GRS Rear Bag will help you shoot more accurately with Bipods. This works better than monopods. The bag's surface is smooth to let

the stock slide easily during recoil, giving you maximum accuracy.

The rear bag has a carabiner hook integrated, so you can easily attach this to your rifle sling, thus preventing losing the bag in the field.





# Bits and pieces



## GRS Webshop

GRS now has a webshop - check us out on the website or use the QR code in this page. You'll find all the GRS swag and spareparts as well as many other accessories to improve the quality of your shooting.



## GRS Newsletter

Get the latest news ahead of everybody else by signing up on our newsletter. Simply go to our website to sign up today. We frequently add our product development insights to our blog post library.



[facebook.com/grsriflestocks](https://facebook.com/grsriflestocks)



[youtube.com/grsriflestocks](https://youtube.com/grsriflestocks)



[grsriflestocks](https://grsriflestocks)

## GRS Social Media

We are continuously updating our Social Media presence in YouTube, Instagram and Facebook. Look for our work or our clients' photo submissions in our instagram and Facebook feeds. You will also find - in our YouTube channel, continuous updates and upgrades to our instructional videos.

## Maintenance

GRS laminate rifle stocks are treated with an **oiled finish**. It is important to maintain this finish **2-3 times a year** (frequency depends on the use) to prevent moisture from entering the laminate. All oiled wooden and laminate stocks need maintenance. We recommend GRS Oil or, if not available, Birchwood Casey Tru-Oil®

Please ask your local gunsmith or stock maker how to refurbish the stocks. If you are in doubt about this process, please ask your GRS dealer for assistance or watch our **instructional video** on our website.

## Assembly

Most GRS laminate stocks are manufactured as a drop-in inlet. With few exceptions it is a **matter of undoing the action screws and move the action to the GRS stock**. The recommended torque on the screws are:

- Laminate: 3-3.5 N·m (26-31 In/lbs),
- Fenris: 5 Nm (45 In/lbs)
- Bifrost: 5.2 Nm (45 In/lbs)
- Warg: 5.2 Nm (45 In/lbs)
- Ragnarok: 5.5 Nm (45 In/lbs)
- Berserk: 5 Nm (45 In/lbs) *(Discontinued)*
- Bolthorn: 5.5-6 Nm (48-53 In/lbs) *(Discontinued)*

If in doubt, please contact your **GRS dealer or gunsmith for assistance**.

## Glass bedding

Despite the drop-in inlet fitting, **we recommend to glass bed** all our laminate stocks for

maximum accuracy. If you are shooting magnum calibers, glass bedding is **always required** so the action does not have any play during recoil.

**Glass bedding should always be carried out by a gunsmith and is always required for the following inlets:**

- Schultz & Larsen
- Rössler Titan 6
- Sauer 100
- Blaser R8 Professional
- Blaser R93 Offroad/Professional.

## GRS Warranty

The warranty period for a GRS rifle stock applies for two (2) years from the date of purchase. To obtain warranty service, the original proof of purchase will be required. Within this warranty period GRS Riflestocks AS agrees to correct any defect in the product for the original purchaser by repair, adjustment or replacement with the same or equal quality components.

The warranty covers defects in materials and workmanship. There will be exclusions to the warranty where a defect is caused by misuse, maintenance neglect, tampering, or unauthorised repair of the product.

To obtain service under the warranty, please contact your place of purchase.



# A word from our ambassadors

« I use GRS because I wanted to improve my shooting. Besides all the ergonomic adjustments, Bifrost easily accepts bidpods, cameras, search lamp etc. and can withstand really tough conditions. »


Christoffer Zetterdal, Sweden

« While hunting Arctic foxes in a vast open landscape, I spend a long time behind the rifle. The adjustability of the GRS stocks and ergonomic design put a minimum strain on my body, allowing me to stay out longer and hunt harder. »

Gunnar, from Gunnar & Alma, Iceland

« I use GRS Riflestocks because it has good grip and helps me shoot accurately. It's very easy to adjust while hunting whenever I need it. »

Janne Svihus, Norway



« GRS 's range of models is perfect for me, because I shoot both long distance and hunting, and it 's quality and finish are impeccable, as well as their service. »

Knut Erik Rognes, Norway

« We use Blaser direct pull rifles with GRS Bifrost stock. Bifrost stock fits well for us because its many features enable multipurpose hunting for us. »


Team Karhukopla, Finland

« I feel GRS 's riflestocks give me the best shooting comfort, and make me a safer and better hunter. »

Elisabeth Idland, Norway

« After I started using the GRS Bifrost on my custom build long-range rifle, the grouping became tighter at all ranges. I have great grip and control over the rifle, even in bad weather conditions. I simply shoot better and I am more effective when I 'm out hunting. »

Alma, from Gunnar & Alma, Iceland

 **MADE IN NORWAY**

We have endeavoured to make sure that all product photos and specifications in this brochure are updated and accurate. Please note that - due to our focus on the continuous improvement of our product line - changes in design or materials may occur after the publication of this brochure. GRS Riflestocks AS reserves the right to modify or change specifications without notice.

