



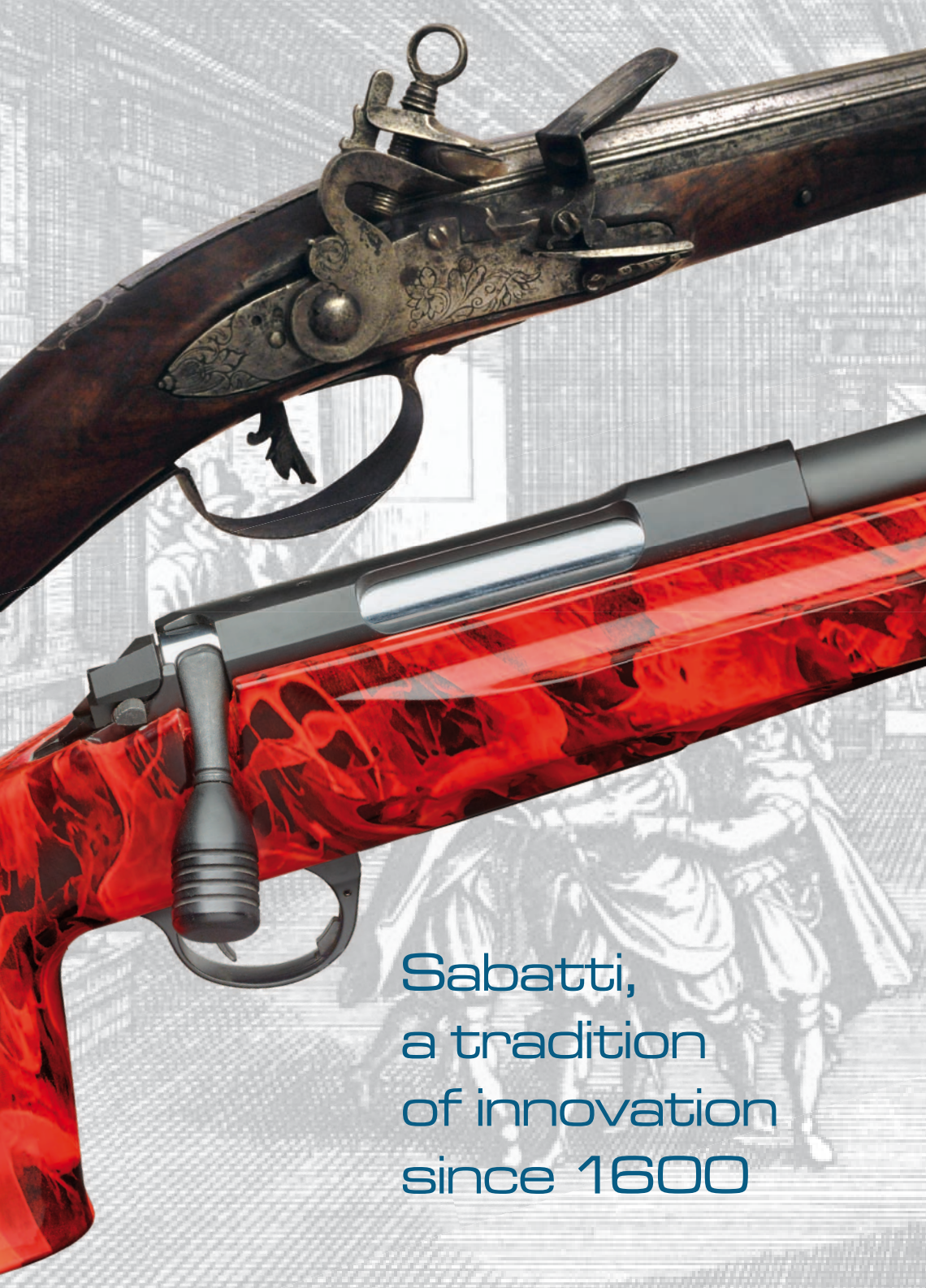
# Sabatti



catalogue2020







Sabatti,  
a tradition  
of innovation  
since 1600



*The Sabatti family has been in the gun making business since the early 1700s and - through ingenuity and diligence - it has been a very active part of the gun making history of the Val Trompia region.*

## 1674-1745

Mr. Ludovico Sabatti is busy producing flint pistols as well as excellent barrels.



## 1760 - 1815

Mr. Giuseppe Sabatti continues the family tradition becoming known as a very good pistol maker. Another Giuseppe Sabatti is regarded as one of the best Damascus barrel maker of his times. He “boils” barrels.



## 1840-1880

A master barrel maker named Domenico Sabatti and a pistol maker named Giovanni Sabatti work in Val Trompia over a period of 40 years.



## 1970

FIAS – Sabatti starts manufacturing over and under shotguns with underbite locking systems, which definitely improves gun reliability and looks.



## 1980

Sabatti SpA design and engineers the automatic ejector system named “Self Acting Control” for over and under shotguns. This guarantees powerful and safe expulsion even with slightly deformed ammunition.



## 1987

The first bolt action rifle fully designed and manufactured in Italy is launched on the international markets by Sabatti SpA.



## 2011

Sabatti SpA designs and introduces the MRR® or Multi Radial Rifling, a new rifling system that significantly improves the ballistic performances of rifle barrels.



## 2017

The new three lugs bolt action rifle with interchangeable barrel is launched on the international markets by Sabatti spa



## 2018

2018 Sabatti SpA is one of the leading company in the long range shooting sector





## Sabatti Multi Radial Rifling MRR®

- HIGHER BULLET SPEED
- IMPROVED GROUP CONCENTRATION
- REDUCED NUMBER OF FLIERS
- LESS COPPER DEPOSITS
- LESS CLEANING REQUIRED
- EASIER CLEANING WHEN NEEDED
- LESS BARREL WEAR



Sabatti S.p.A. has designed and introduced a new precision rifling profile called **MULTI-RADIAL (MRR®)** with unique features over that of traditional rifling.

The objective was to develop a rifling system with all the positives of the traditional type and none of the negatives.

If you compare the **TRADITIONAL RIFLING (pic. 1)** with the **POLYGONAL (pic. 2)** and the **MULTI-RADIAL** ones (**pic. 3**), you will see that the last one is ideal with both traditional and monolithic bullets.

With **MULTI-RADIAL** barrels (**pic. 3**) two different radiuses alternate in order to positively grip the bullet geometrically without submitting it to extreme stress.

As a matter of fact, the bullets are pressure formed following a circumference and not cut like in traditional rifling (**pic. 1**) which extends the life cycle of the barrel. Also there is no sharp corner to fill like in the other rifling systems (**pic. 1 & 2**), therefore the barrel is cleaner and wears more slowly.

All tests we have carried out prove that:

**MULTI-RADIAL** barrels perform better and with more accuracy than barrels with traditional rifling using traditional lead bullets in all calibers as well as monolithic bullets.

Speed is higher than with traditional rifling - up to 10% under certain circumstances - at standard pressure values. Bullets seal the barrel bore better thus preventing gas from escaping forward and optimizing the effect of the propelling energy. Also friction between bullets and barrel is reduced to the minimum.

Group concentration is substantially improved due to the extremely tight manufacturing tolerances that can be kept while manufacturing **MULTI-RADIAL** barrels. As a matter of fact the multi-radial rifling lends itself perfectly to our cold hammer forging. The resulting rifling profile consistency is excellent and the overall quality of our barrels is increased.

The specific rifling geometry of the forcing cone in **MULTI-RADIAL** barrels makes it possible for the chamber neck and freebore to guide the bullets into the rifling more precisely and steadily than with the traditional rifling system - the bullet matches the barrel axis in the best possible way thus reducing the fliers.

Under similar circumstances - less copper deposits inside **MULTI-RADIAL** barrels and, therefore, less cleaning is required. Also, when needed, cleaning is much easier to do than with traditional rifling.

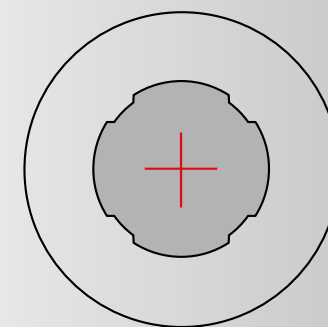
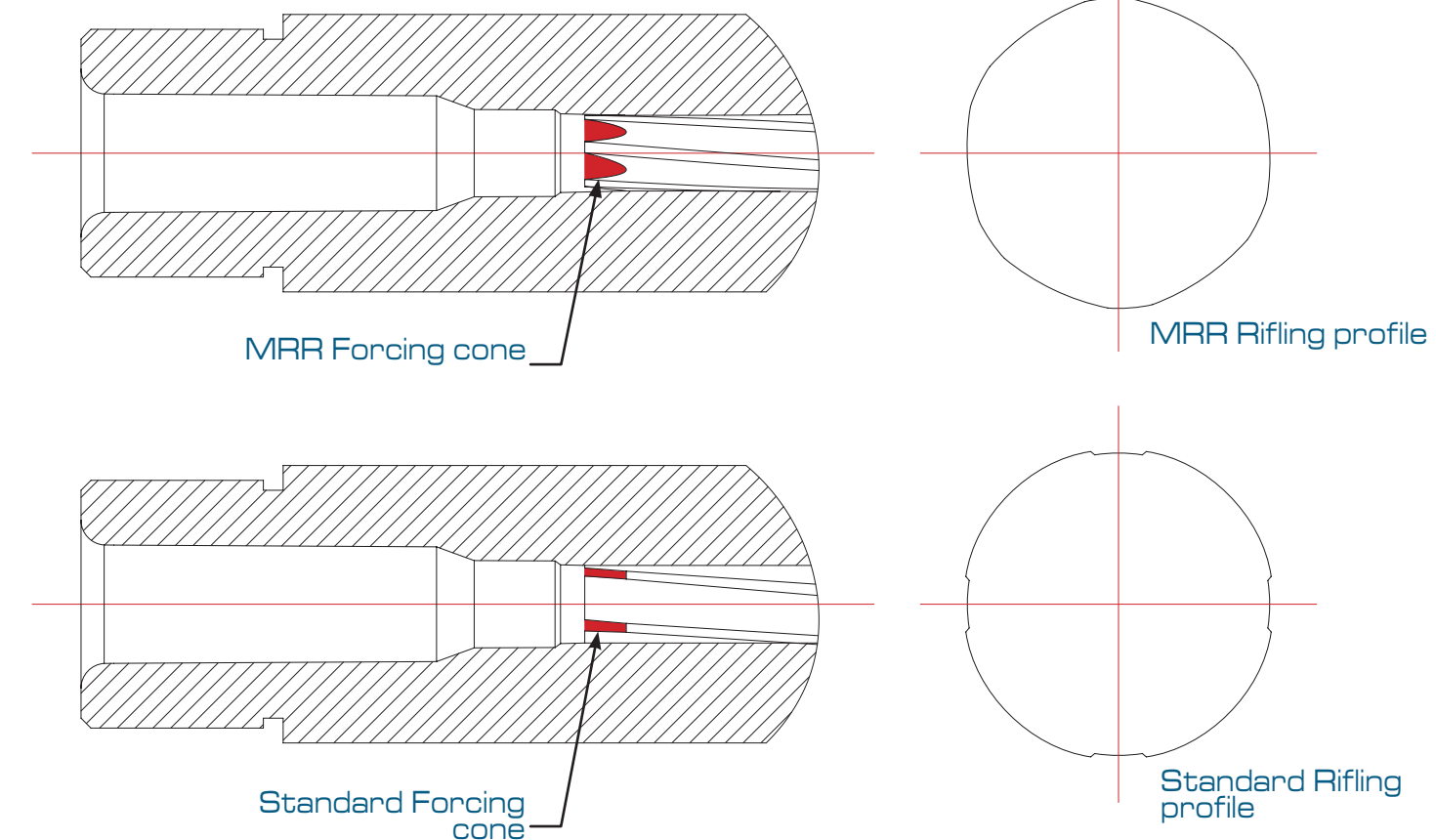
Shooters can improve **MULTI-RADIAL** barrel performance by simply lapping the bore with abrasive paste pads with no fear of ruining the rifling edges like with traditional rifling.

These are all the reasons why **MULTI-RADIAL** rifling is truly ideal for target and competition shooting and is requested by almost all our shooters. And that is why now all Sabatti target rifles come with **MULTI-**

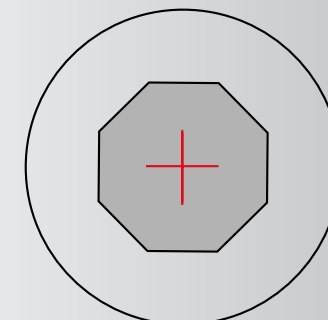
**RADIAL** rifling. After the many tests carried out, we also equipped all the Saphire hunting rifles with this type of barrel.

At Sabatti we believe we have reached the objective we had while designing the new system and, by doing so, we have exceeded our expectations.

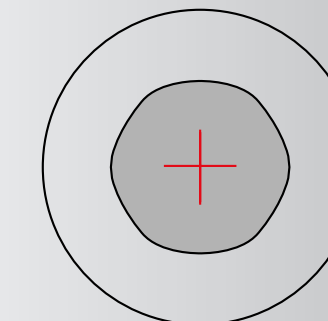
### SABATTI MULTI-RADIAL RIFLING VS TRADITIONAL RIFLING



pic. 1 - conventional rifling



pic. 2 - polygonal rifling



pic. 3 - multi-radial  
Sabatti rifling





## The three actions



**ROVER**

### ROVER

Back in 1985 the industrial designers and engineers at FIAS (Fabbrica Italiana Armi Sabatti, now Sabatti) were challenged to design an action that would compete with the most popular US actions. They did so by incorporating the best features of all bolt action rifles sold in the USA in just one action. Expectations were not only met but also exceeded and, 35 years later, this extremely versatile action is still widely used for hunting, competition, long-distance shooting and training.

The action is manufactured by state of the art high tech casting of best quality steel alloys subsequently machined on the most advanced CNC equipment. The same applies to the bolt with its solid handle and two Mauser-style tenons. Both action and bolt are heat treated after machining for superior resistance and durability.

This traditional 2-tenon action with 90 degrees bolt opening may be less fluid and slightly slower to operate than newer 3-tenon actions. However, military troops, hunters and shooters have used it for over 120 years accumulating endless experience that translates in unmatched reliability. Robust contact surfaces between tenons, bolt and frame combined with the long travel of the firing pin make this action perfectly suitable even under the worst weather conditions.

The solid recoil lug also plays an important role in increasing the overall solidity of the action and reducing vibration to the benefit of precision.

And for all the reasons above shooters of all ages and provenance still choose Sabatti rifles built on Rover actions and love them!

### SAPHIRE

The receiver is machined from a solid block of Ergal 55 aluminum alloy and features two solid Picatinny rails to easily fit the mounting solution of your choice and regulate your



**SAPHIRE**

gun. The 3-front-lug bolt with 60 ° locking consists of three main parts: head, body and handle. The body heat-treated and ground moves very smoothly allowing fast repetition. The head in special steel undergoes a thorough heat treatment that makes it strong, but not brittle and therefore able to withstand the high pressure generated by the explosion in the body. The floating head guarantees perfect contact in the barrel extension with all three lugs thus improving precision.

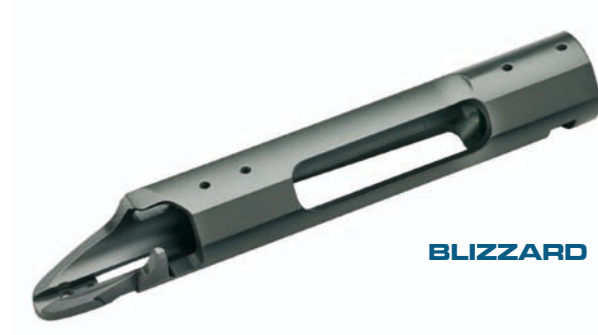
A 5/16" thread allows to easily switch bolt handle and go from a traditional spoon-shaped hunting handle to a very tactical one.

The most important part of the gun in terms of accuracy and safety is the "barrel extension" with bolt head in NiCrMo steel. This undergoes a special heat treatment for a hard surface with a strong core allowing superior strength and longevity.

The interchangeable barrels are surely fixed to the barrel extension by means of 3 M6 screws that can be removed and replaced using the hexagonal wrench provided.

### BLIZZARD

This action was designed and built in cooperation with the renowned manufacturer of competition rifles, BCM. It is not a hunting action converted to competition, like so many others on the market today. This action was specifically designed for sporting and tactical shooting where the need for resistance, longevity and accuracy is more extreme than in hunting.



**BLIZZARD**

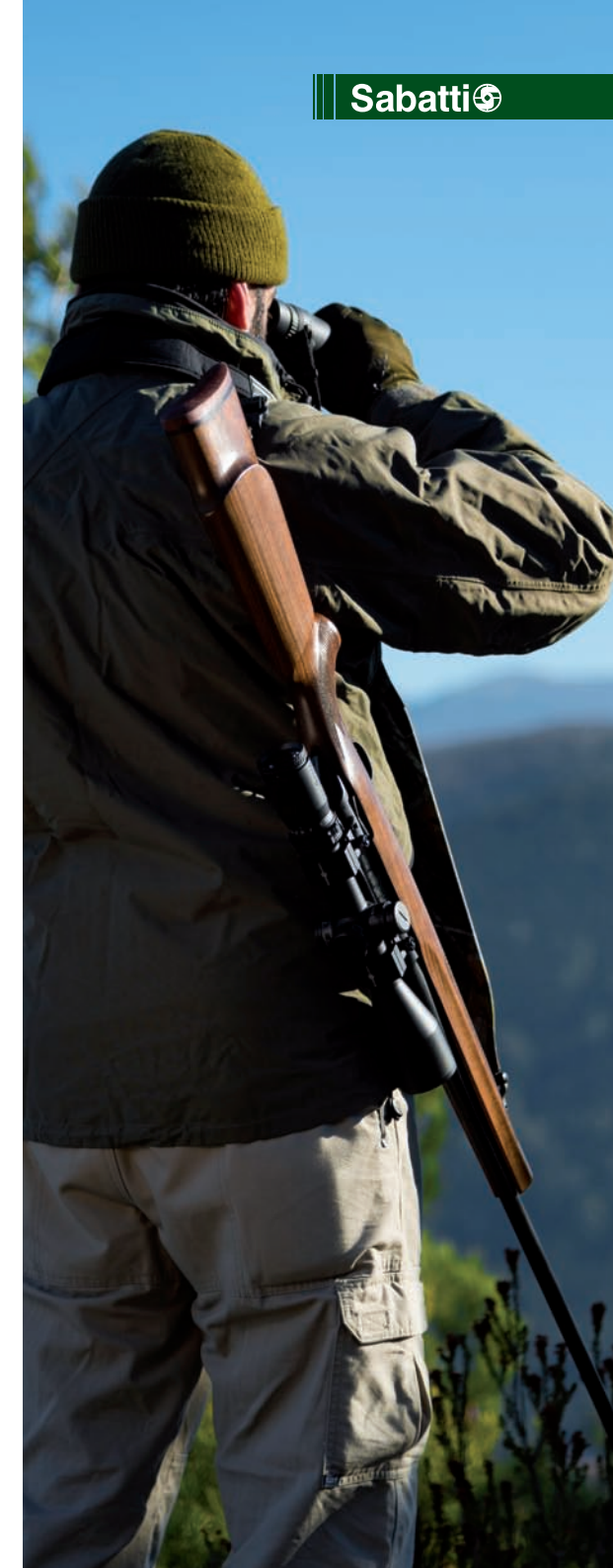
The new action is manufactured on lathes and milling machines starting from solid bars of high resistance steel alloy. It features three locking lugs with an easy and fast 60° opening. The handle of the 3-front-lug bolt with a 5/16 thread is easily interchangeable. After machining, the action is heat treated for resistance, ground and chrome plated. The smooth contact surfaces guarantee effortless bolt movement as well as lower noise level than all competitors' products.

The special steel alloy of actions and bolts generates surfaces that are very hard, basically indestructible, but not fragile. The cores are strong.

The new guillotine-type extractor is extremely reliable and safe, as it cannot move backwards when the cartridge bottom expands under pressure. This design tends to reduce (but not eliminate) the damages generated by the use of ammunition operating at out of range pressures.

But what truly sets this rifle apart is the way action and stock come together in a dynamic suspension. The new action "floats" above the stock by means of two supports, a V-shaped front block, which works as a recoil lug, and a rear cradle block. The barrel is completely suspended. The stress and tension generated by traditional barreled action- stock bedding and fitting are therefore eliminated to the benefit of accuracy. This system can be called "SUSPENDED ACTION".

Thanks to the all the features and pluses described above, we feel 100% confident we offer one of the best competition actions available on the market today.





# Tactical EVO



TACTICAL EVO BLACK

TACTICAL EVO – BLACK/CHROME/DESERT

The European version of the Tactical EVO bolt action rifle comes with the new 3-tenon Blizzard action and is perfect for all heavy duty applications where resistance over time and accuracy are a must. The steel receiver is new and so is the robust 3-tenon locking bolt with a fast 60°opening and an interchangeable handle with 5/16" thread. All contact surfaces are highly polished to facilitate movement and reduce noise substantially more than in most competitors' products.



TACTICAL EVO CHROME

This bolt action rifle features the new guillotine-style extractor in 17-4PH stainless steel. As a result, the cartridge bottom is always well supported to prevent failures even at extremely high pressures. But what truly tells the new Sabatti Tactical EVO bolt action rifle apart from the competition is the way the action is fitted to the stock. The action literally "floats" above the stock by means of two supports which eliminate stress and improve accuracy. We can definitely say that the Tactical EVO is one of the best actions on the market today. The rifle is provided with a round barrel, 28 mm in diameter at the muzzle and either 660 mm or 710 mm long. The barrel features the Sabatti Multi-Radial "MRR" Rifling System universally proven to improve shooting performance overall. The muzzle comes with a 5/8" thread and cover to fit compensators or muzzle brakes.



TACTICAL EVO DESERT

The stock on the Tactical-EVO employs a very resistant techno-polymer that withstands the extremely high pressures generated in this gun. The new Sabatti Tactical-EVO is a modern rifle, technologically advanced, good looking and more accurate than the Tactical Syn, which is hard to believe considering how precise the Syn already was!

CALIBERS	Twist (inches)
308 Win 6,5X47 Lapua 6 Creedmoor 6,5 Creedmoor 6,5x55 SE 300 Win. Mag. 284 Shehane	11 MRR® 7,5 MRR® 8 MRR® 8 MRR® 8 MRR® 11 MRR® 8,25 MRR®

MATCH TRIGGER	TRIGGER WEIGHT gr (lbs) 600 (1,3)	MAGAZINE DETACHABLE 3	LENGTH OF PULL mm (inches) 345 (13,58)
BARREL LENGTH mm (inches) 660 (26) 710 (28)	OVERALL LENGTH mm (inches) 1.140 (44,88) 1.220 (48)	MUZZLE DIAMETER mm (inches) 22 (0,87) 28 (1,10)	AVERAGE WEIGHT kg (lbs) 5,5 (12,12) / 6,2 (13,67) 6,4 (14,11)



# Tactical EVO US



TACTICAL EVO US BLACK

### TACTICAL EVO US – BLACK/CHROME/DESERT

Just like the European version, the Tactical-EVO-US comes with the new 3-tenon Blizzard action and is perfect for all heavy duty applications where resistance over time and accuracy are a must. The steel receiver is new and so is the new 3-tenon locking bolt with a fast 60° opening and an interchangeable handle with 5/16" thread. All contact surfaces are highly polished to facilitate movement and reduce noise substantially more than in most competitors' products. This bolt action rifle features the new guillotine-style extractor in 17-4PH stainless steel.



TACTICAL EVO US CHROME

As a result, the cartridge bottom is always well supported to prevent failures even at extremely high pressures. But what truly tells the new Sabatti Tactical-EVO-US apart from the competition is the way the action is fitted to the stock. The action literally floats above the stock by means of two supports which eliminate stress and improve accuracy. We can definitely say that the new Sabatti Tactical EVO is one of the best actions on the market today. The Tactical-EVO-US is provided with a round barrel, 22 mm in diameter at the muzzle and either 560 mm or 610 mm long. The barrel features the Sabatti "MRR" Multi-Radial Rifling System universally proven to improve shooting performance overall. The muzzle comes with a 5/8" thread and cover to fit compensators or muzzle brakes.



TACTICAL EVO US DESERT

The stock on the Tactical-EVO-US, designed for dynamic shooting competitions, is in a lighter polymer than the stock on the Tactical EVO. It also features 4 QD steel inserts for ease of transportation with a strap. The new Sabatti Tactical-EVO-US is a modern rifle, technologically advanced, good looking and more accurate than the Tactical Syn, which is hard to believe considering what precise the Syn already was!



CALIBERS	Twist (inches)	MATCH TRIGGER	TRIGGER WEIGHT gr (lbs)	MAGAZINE DETACHABLE	LENGTH OF PULL mm (inches)
308 Win 6,5X47 Lapua 6 Creedmoor 6,5 Creedmoor 6,5x55 SE 300 Win. Mag. 284 Shehane	11 MRR® 7,5 MRR® 8 MRR® 8 MRR® 8 MRR® 11 MRR® 8,25 MRR®		600 (1,3)	7	345 (13,58)
		BARREL LENGTH mm (inches)	OVERALL LENGTH mm (inches)	MUZZLE DIAMETER mm (inches)	AVERAGE WEIGHT kg (lbs)
		560 (22) 660 (26)	1.040 (40,95) 1.140 (44,88)	22 (0,87)	5,2 (11,46)/ 5,5 (12,12)



TLD (Long Distance Shooting)

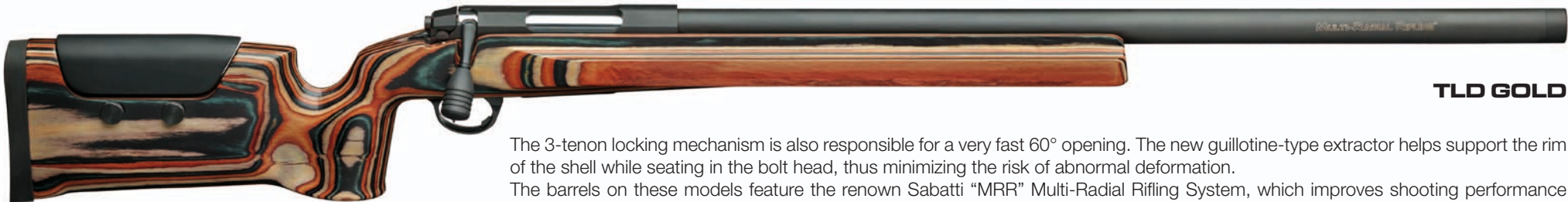


TLD RED



TLD RED /GOLD

Sabatti bolt action rifles in the TLD series are specifically designed for Long Distance Shooting, the discipline they are named after in Italian (Tiro a Lunga Distanza) and, as such, they meet the specific requests of very demanding competition shooters. These rifles feature two of the most important requisites for long distance shooting i.e. perfect alignment of bolt and barrel and perfect fit of lugs and frame to maximize contact surfaces. However, it is the way the action fits the stock that tells these rifles completely apart. Stock and frame do not touch like they normally do. The frame is actually suspended above the stock by means of a front V block, that also functions as a recoil lug, and a rear round cradle, which eliminates stress and improves shooting. Sabatti has named this system “SUSPENDED ACTION”. The mechanism, bolt and magazine are all machined from solid bars of high resistance steel. The surface is hard, but the core is soft, which makes them super strong, but not fragile. This is of the utmost importance with long distance rifles as shooters are notorious for “abusing” ammunition while trying to squeeze another meter a second out of them, regardless of the pressures developed.



TLD GOLD

The 3-tenon locking mechanism is also responsible for a very fast 60° opening. The new guillotine-type extractor helps support the rim of the shell while seating in the bolt head, thus minimizing the risk of abnormal deformation. The barrels on these models feature the renown Sabatti “MRR” Multi-Radial Rifling System, which improves shooting performance overall. They are cold-hammer forged to a length of 710 mm and a muzzle diameter of 28 mm. The stock on the TLD models is an evolution of the “F-Class” stock and is geared towards competition. It is made of a new multilayered laminated material of Italian origin, much stronger than the materials coming from Northern Europe. The result is a more rigid stock with enhanced vibration absorption to the benefit of the overall performance of the gun.

CALIBERS	Twist (inches)	MATCH TRIGGER	TRIGGER WEIGHT gr (lbs)	MAGAZINE DETACHABLE	LENGTH OF PULL mm (inches)
308 Win 6,5X47 Lapua 6,5 Creedmoor 284 Shehane	MRR® 8 MRR® 8 MRR® 8 MRR®		600 (1,3)	3	350 (13,78)
		BARREL LENGTH mm (inches)	OVERALL LENGTH mm (inches)	MUZZLE DIAMETER mm (inches)	AVERAGE WEIGHT kg (lbs)
		710 (28)	1.120 (47,64)	28 (1,10)	6,5 (14,33)



STR SPORT



STR SPORT RED

**STR SPORT RED**  
Contrary to its predecessor, the model STR, the new STR SPORT is a bolt action rifle specifically created for precision target shooting. The STR SPORT features the Sabatti signature “Rover” short action with a 3-round magazine. The barrel, available in either 710 mm or 660 mm with a diameter of 28mm at the muzzle, comes with the renown Sabatti Multi-Radial Rifling System. The trigger is the 3-lever Match with a trigger pull weight ranging between 550 and 600g. The external magazine release lever is very suitable for the fast pace of competition. The modular stock is fitted with an aluminum chassis, a new and wider forearm and a butt stock milled from bars of high resistance Ergal 55 aluminum alloy. An integrated Anschutz-style bipod rail and a rear bag rider assure great stability for shooting. The rifle is red anodized. The 2-tenon bolt features an interchangeable knob. On request, the rifle can come with a 20 MOA steel rail.

CALIBERS	Twist (inches)	MATCH TRIGGER	TRIGGER WEIGHT gr (lbs)	MAGAZINE DETACHABLE	LENGTH OF PULL mm (inches)
6,5X47 Lapua 6,5 Creedmoor 308 Win 300 Win. Mag. 284 Shehane	8 MRR® 8 MRR® 11 MRR® 11 MRR® 8,25 MRR®		600 (1,3)	3	340 (13,38)
		BARREL LENGTH mm (inches)	OVERALL LENGTH mm (inches)	MUZZLE DIAMETER mm (inches)	AVERAGE WEIGHT kg (lbs)
		710 (28)	1.190 (46,85)	28 (1,10)	6,3 (13,89)



STR SPORT BLACK



ST-18



CALIBERS	Twist (inches)	MATCH TRIGGER	TRIGGER WEIGHT gr (lbs)	MAGAZINE DETACHABLE	LENGTH OF PULL mm (inches)
6,5X47 Lapua 6 Creedmoor 6,5 Creedmoor 308 Win	8 MRR® 7,5 MRR® 8 MRR® 11 MRR®		600 (1,3)	7	360 (14,17)
		BARREL LENGTH mm (inches)	OVERALL LENGTH mm (inches)	MUZZLE DIAMETER mm (inches)	AVERAGE WEIGHT kg (lbs)
		510 (20)/ 610 (24)	1.060 (41,73)/ 1.160 (45,67)	22 (0,87)	4,95 (10,91)/ 5,15 (11,35)

ST-18

The ST-18 is a very versatile bolt action rifle designed to excel at target and long distance shooting, dynamic and tactical shooting as well as hunting.

Action

The new receiver is machined from bars of high resistance steel alloy and houses a strong 3-tenon locking bolt, designed to allow for fast 60° opening. The bolt comes with an interchangeable handle with 5/16” thread. The high polished contact surfaces reduce friction and operational noise to the minimum, in a way that only very few top quality products can offer.

Chassis

The new Chassis is the most distinctive feature of the ST-18, a rifle that stands out for its modern, refined and yet extremely functional design. The chassis, machined from a solid block of Ergal 55 on the most advanced CNC machines available today, houses an AICS-compatible magazine, with an extremely functional release. The rear attachment of the stock is M4 compatible to fit a wide variety of stocks, while the front houses the tubular forearm.

Tubular forearm

The tubular forearm is cut and turned from an aluminum profile extrusion and features a very modern and captivating look. It is ready to be fitted with all accessories available on the market today thanks to several K-mode anchor points cut into the profile (M-lock in the USA).

Butt stock

Sabatti has chosen to build the butt stock of the ST-18 tactical rifle in the best techno-polymer available on the market today. This polymer is heavily charged with glass fiber and is extremely durable, stable and pleasant to the touch. The lines of the butt stock have been very carefully studied and designed to achieve a stock that is comfortable and yet fast to mount. The 4 quick connect steel inserts for the strap make this stock perfectly suitable for dynamic shooting competitions. The cheek piece adjustment is fast and intuitive. Each rifle also comes with a spacer to adjust length of pull. On request, additional spacers can be ordered from the factory as well as the pad position regulation system. The system is quick to adjust, yet solid and makes transport very easy.

Barrel

The barrel, available in either 510 mm or 610 mm with a diameter of 22 mm at the muzzle, features the renown Sabatti Multi-Radial Rifling System. The barrel comes with a 5/8”-24 thread with a tactical style 3-chamber muzzle brake and thread cover.





STR



**STR**

While the Tactical-EVO bolt action rifle was designed mainly for precision target shooting, the STR model has been created for tactical “field” applications. It comes with the Sabatti signature “Rover” long action with a 7-round AICS magazine (Accuracy International Compatible magazine).

The barrel provided with the proprietary Sabatti Multi Radial Rifling System is 22 mm at the muzzle and comes with 5/8”-24 thread to fit most accessories available on the market today. A thread cover and a 3-chamber compensator come standard on each barrel.

The bolt features an interchangeable tactical handle and an external magazine release lever very suitable for the faster pace of competition. The trigger on this rifle is the 3-lever Match with a trigger pull weight of 550 - 600g set at the factory.

The modular stock consists of a chassis machined from a solid block of Ergal 55 aluminum light alloy. The butt stock is fully adjustable and can be folded to a smaller size for ease of transportation. The model STR can be ordered with or without a buttstock as it fits all “M4” type stocks sold on the market today.

The barrel is fitted with a custom AR-Style Picatinny hand guard that matches the 20 MOA steel rail on the action. Three additional rails on the hand guard can accommodate any accessory a shooter may want. All Picatinny rails on the hand guard are machined from solid billets of Ergal 55 alloy.

A synthetic rod connects the barrel cover to the stock body to facilitate free standing shooting and for ease of transportation with folded stock.



CALIBERS	Twist (inches)	MATCH TRIGGER	TRIGGER WEIGHT gr (lbs)	MAGAZINE DETACHABLE	LENGTH OF PULL mm (inches)
6,5X47 Lapua 6,5 Creedmoor 300 Win. Mag. 308 Win	8 MRR® 8 MRR® 11 MRR® 11 MRR®		600 (1,3)	7	340 (13,38)
		BARREL LENGTH mm (inches)	OVERALL LENGTH mm (inches)	MUZZLE DIAMETER mm (inches)	AVERAGE WEIGHT kg (lbs)
		660 (26)	1.140 (44,88)	22 (0,87)	6,1 (13,15)



URBAN SNIPER



**URBAN SNIPER**  
The URBAN SNIPER is an extremely versatile bolt action rifle ideal for hunting, competition and tactical applications. The innovative pistol grip design of the stock guarantees a perfect hold under any shooting condition. As a matter of fact, although it was conceived for precision target shooting, it has proven to be extremely effective for moving target acquisition at short distances. The relatively small forearm features a flat bottom that makes it very versatile and adaptable to all hunting and shooting conditions. The cheek piece is fully adjustable and the LOP can also be adjusted through spacers that come standard with the rifle. The stock in high resistance polymer charged with fiber glass is ultra-light, yet very strong. It reduces vibration to the benefit of precision. A substantial rubber recoil pad also helps reduce perceived recoil even with magnum calibers. The URBAN SNIPER comes standard with a 3-lever Match Trigger; a standard trigger or Set Trigger are available on request. The barrel is 510 mm long and 22 mm in diameter at the muzzle and features the renown Sabatti Multi-Radial Rifling System. It also features a 5/8"-24 thread with a tactical style 3-chamber muzzle brake and thread cover. The bolt is provided with an interchangeable tactical handle and an external magazine release lever particularly suitable for the fast pace of competitions. The magazine is an Accuracy International Compatible 7-round magazine and the trigger is standard. A 3-lever Match Trigger is also available on request. Action and barrel are blued to reduce glare

CALIBERS	Twist (inches)	NORMAL TRIGGER	TRIGGER WEIGHT gr (lbs)	MAGAZINE DETACHABLE	LENGTH OF PULL mm (inches)
6,5X47 Lapua 6,5 Creedmoor 223 308 Win	8 MRR® 8 MRR® 8 MRR® 11,5 MRR®		1.100 (2,4)	7	345 (13,58)
		BARREL LENGTH mm (inches)	OVERALL LENGTH mm (inches)	MUZZLE DIAMETER mm (inches)	AVERAGE WEIGHT kg (lbs)
		510 (20)	1.000 (39,37)	22 (0,87)	4,6 (10,14)



SAPHIRE E.R.



SAPHIRE ER (EXTENDED RANGE)

The SAPHIRE ER has been designed for all those hunters who do not want to carry heavy and “complicated” target rifles, but still enjoy an extended range of hunting.

The action is machined from a solid block of Ergal 55 aluminum alloy and features integrated Picatinny rails for fast fitting and regulation of sighting devices.

The bolt with 3 front lugs is no longer a monolithic piece but is made in three parts: the head, the body and the handle. This allows a more accurate manufacturing of the parts, the use of different kinds of steel and heat treatments based on the mechanical features required. The bolt moves very smoothly after assembly and its floating head guarantees perfect contact on all 3 lugs thus enhancing precision. The tactical bolt head design makes operation faster and easier.

The barrel muzzle diameter is bigger than on standard hunting rifles (17 mm). The barrel in AISI 4140 steel (42CrMo4) are all cold-hammer forged and their Multi-radial Rifling (MMR) improves accuracy and guarantees longer barrel life, easy cleaning and higher bullets speed. The threaded muzzle is “brake ready”. Barrels are interchangeable just by means of a simple wrench for M6 screws and a Torx wrench for the stock. You can switch from one caliber to another in the same group by replacing the barrel; if the calibers are not in the same group, magazine and bolt head shall also be replaced.

The barrel extension made of NiCrMo steel is hardened and tempered by a special process to improve hardness on the surface and tenacity in the heart. The same happens to the bolt head which is the most important part of the gun as safety entirely relies on it.

The innovative pistol grip design of the stock guarantees a perfect hold under any shooting condition. As a matter of fact, although it was conceived for precision target shooting, it has proven to be extremely versatile and very effective for moving target acquisition. The forearm is small, as is typical for hunting. However, the flat bottom makes it very versatile and adaptable to all hunting and shooting conditions. Two simple screws make the cheek piece adjust up and down. The LOP can also be adjusted through spacers that come standard with the rifle. The stock in high resistance polymer charged with fiber glass is ultra-light, yet very strong. It reduces vibration to the benefit of precision. A substantial rubber recoil pad also helps reduce perceived recoil even with magnum calibers.

This model comes standard with a 3-lever Match trigger or a Set Trigger on request.

CALIBERS	Twist (inches)
308 Win. 270 Win. 30-06 Spring 6,5x55 SE 6,5 Creedmoor 7X64 7mm Rem. Mag 300 Win. Mag.	11 MRR® 10 MRR® 11 MRR® 8 MRR® 8 MRR® 8,25 MRR® 8,25 MRR® 11 MRR®

MATCH TRIGGER	TRIGGER WEIGHT gr (lbs) 600 (1,3)	MAGAZINE DETACHABLE 3	LENGTH OF PULL mm (inches) 365 (14,37)
BARREL LENGTH mm (inches) 610 (24)/ 650 (25,5)	OVERALL LENGTH mm (inches) 1.140 (44,88)/ 1.180 (46,46)	MUZZLE DIAMETER mm (inches) 17 (0,66)	AVERAGE WEIGHT kg (lbs) 3,4 (7,5)/ 3,6 (7,9)



SAPHIRE CARBON



CALIBERS	Twist (inches)	STECHER OR MATCH TRIGGER	TRIGGER WEIGHT gr (lbs)	MAGAZINE DETACHABLE	LENGTH OF PULL mm (inches)
6,5 Creedmoor 308 Win 300 Win.Mag.	8 MRR® 11 MRR® 11 MRR®		600 (1,3)	3	360 (14,17)
		BARREL LENGTH mm (inches)	OVERALL LENGTH mm (inches)	MUZZLE DIAMETER mm (inches)	AVERAGE WEIGHT kg (lbs)
		660 (26)	1.160 (45,67)	22 (0,87)	3,7 (8,15)

SAPHIRE VARMINT CARBON

The Sabatti SAPHIRE VARMINT CARBON is a hunting bolt action rifle ideal for all types of hunting, from the Alps to the Rockies, where accuracy and light weight are of the utmost importance. Although light weight is often the enemy of precision in rifle manufacturing, we have been able to lighten every single component of our rifle, yet keeping its overall rigidity intact. We have intentionally started from our Saphire action which is machined from a block of Ergal 55, a notoriously rigid, but light alloy. The design is completely modern, yet very refined. The Multi-Radial (MRR) barrels are cold hammer forged first to a muzzle diameter of 16mm, which reduces weight, and are subsequently wrapped in Carbon to increase rigidity and reach a diameter of 22mm at the muzzle. The aluminum muzzle brake is threaded on with a 5/8"-24 thread. It has taken the Sabatti team of engineers well over two years to determine how to best combine carbon and steel: these two materials distend completely differently under the effect of temperatures thus making it very difficult to keep shooting accuracy as temperature in the barrels goes up. But we feel we have definitely achieved the accuracy we were looking for! The stock features an innovative design. The pistol grip guarantees a very steady hold under all shooting conditions. As a matter of fact, although the stock was originally designed for precision target shooting, it has proven to be very good at engaging moving targets at short distances. In other words, this is an extremely versatile stock capable of meeting a specific market need for the first time. The small forearm is a perfect grip for hunting, but its flat bottom makes it also idea for almost all precision shooting conditions. The height of the cheek piece can be adjusted by means of 2 screws. The LOP is adjustable through a system of spacers that come standard with the gun. The “hollow” stock in fiber glass charged polymer is light, yet very robust and vibration absorbent. A substantial rubber butt pad also helps reduce perceived recoil even with magnum calibers. The bolt action rifle comes standard with a 3-lever Match trigger. On request, a Set Trigger is also available. The overall weight is only 3.5 kg which makes this model easy to carry in all hunting situations, but also stable and accurate to shoot: a quality one does not often come across in a hunting bolt action rifle.



CALIBERS	Twist (inches)	STECHER OR MATCH TRIGGER	TRIGGER WEIGHT gr (lbs)	MAGAZINE DETACHABLE	LENGTH OF PULL mm (inches)
6,5 Creedmoor 308 Win 300 Win.Mag.	8 MRR® 11 MRR® 11 MRR®		600 (1,3)	3	340 (13,38)
		BARREL LENGTH mm (inches)	OVERALL LENGTH mm (inches)	MUZZLE DIAMETER mm (inches)	AVERAGE WEIGHT kg (lbs)
		660 (26)	1.140 (44,88)/ 1.180 (46,46)	28 (1,10)	4,1 (9)

SAPHIRE TACTICAL CARBON

The Sabatti SAPHIRE TACTICAL CARBON is a light weight bolt action rifle designed for long distance hunting and shooting. Although light weight is often the enemy of precision in rifle manufacturing, we have been able to lighten every single component of this rifle, yet keeping its overall rigidity intact. We have intentionally started from our Saphire action which is machined from a block of Ergal 55, a notoriously rigid, but light alloy. The design is completely modern, yet very refined. The Multi-Radial (MRR) barrels are cold hammer forged first to a muzzle diameter of 16mm, which reduces weight, and are subsequently wrapped in carbon and Kevlar to reach a diameter of 28mm. The aluminum muzzle brake is threaded on with a 5/8"-24 thread. It has taken the Sabatti team of engineers well over two years to determine how to best combine carbon and steel: these two materials distend completely differently under the effect of temperatures thus making it very difficult to keep shooting accuracy as temperature in the barrels goes up. The stock employs a lighter fiber glass charged polymer than the other tactical models, but it is as robust and vibration absorbent. The cheek piece is adjustable for both height and windage. The substantial rubber pad helps reducing perceived recoil even with magnum calibers. The Saphire Tactical Carbon comes standard with either a Set Trigger (Stecher), to be engaged before shooting, or a 3-lever Match. The overall weight is only 4.1 Kg which makes the rifle easy to carry in all hunting situations, but also more stable and accurate for precision shooting than any other rifle on the market today.



SAPHIRE



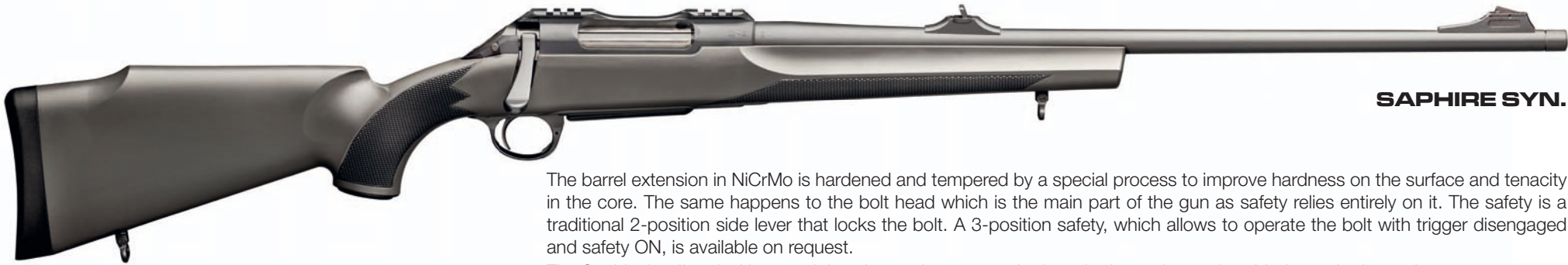
SAPHIRE

SAPHIRE - SAPHIRE SYN. - SAPHIRE THUMBHOLE

the SAPHIRE, Sabatti All Purpose Hunting Italian Rifle, shows a totally different action compared with the oldest Rover rifle. The new receiver is machined from a solid bar of high resistance Ergal 55 aluminum alloy, a notoriously rigid, but light alloy. It comes with an integrated Picatinny rail for fast fitting of scope rings. The design is completely modern and cutting edge, yet very refined.

The bolt with 3 front lugs is no longer a monolithic piece but is made in three parts: the head, the body and the handle. This allows a more accurate manufacturing of the parts, the use of different kinds of steel and heat treatments based on the mechanical features required. The bolt moves very smoothly after assembly and its floating head guarantees perfect contact on all 3 lugs thus enhancing precision.

Barrels are easily interchangeable by using a Torx wrench and an Allen wrench.



SAPHIRE SYN.

The barrel extension in NiCrMo is hardened and tempered by a special process to improve hardness on the surface and tenacity in the core. The same happens to the bolt head which is the main part of the gun as safety relies entirely on it. The safety is a traditional 2-position side lever that locks the bolt. A 3-position safety, which allows to operate the bolt with trigger disengaged and safety ON, is available on request.

The Saphire is offered with a stock in select walnut, a standard synthetic stock or a thumbhole synthetic stock



SAPHIRE THUMBHOLE

BARREL INTERCHANGEABILITY

You can switch from one caliber to another in the same group by just replacing the barrels; if the calibers are not in the same group, magazine and bolt head shall also be replaced.

CALIBRI	Passo di rigatura (inches)	NORMAL TRIGGER	TRIGGER WEIGHT gr (lbs)	MAGAZINE DETACHABLE	LENGTH OF PULL mm (inches)
243 Win.	10 MRR®				
308 Win.	11 MRR®				
270 Win.	10 MRR®				
30-06 Spring	11 MRR®				
6,5 Creedmoor	8 MRR®				
6,5x55 SE	8 MRR®				
7x57	8,25 MRR®				
7x64	8,25 MRR®				
8X57JS	9,5 MRR®				
7mm Rem. Mag. *	8,25 MRR® *				
300 Win. Mag. *	11 MRR® *				
		BARREL LENGTH mm (inches)	OVERALL LENGTH mm (inches)	MUZZLE DIAMETER mm (inches)	AVERAGE WEIGHT kg (lbs)
		610 (24)	1.140 (44,88)	15 (0,59)	3,3 (7,2)/
		650 (25,5)*	1.180 (46,46)*		3,4 (7,5)



ROVER - ROVER LEFT HAND



ROVER

ROVER / ROVER LEFT HAND

The ROVER and ROVER LEFT HAND are Sabatti renown bolt action rifles for hunting. Their bolts with 2 front lugs and receivers are machined from solid blocks of high resistance steel alloy which undergo both a neutral hardening process and a spot heat treatment to optimize strength and durability. The barrels in Chrome Molybdenum steel are cold hammer forged. The highly polished bores and the enhanced dimensional consistency of the rifling results in improved accuracy. The safety is a typical side lever that locks trigger and sear simultaneously thus making the rifle very safe. Fully adjustable American-style sighting devices come standard on the Rover models. The receiver, bolt and stock on the Rover Left Hand mirror the right hand version and are fully customized for left hand shooters.

ROVER

CALIBRI	Passo di rigatura (inches)
222 Rem. 223 Rem.	12 12

NORMAL TRIGGER	TRIGGER WEIGHT gr (lbs) 1.100 (2,4)	MAGAZINE DETACHABLE 3	LENGTH OF PULL mm (inches) 365 (14,37)
BARREL LENGTH mm (inches) 560 (22)/ 610 (24)	OVERALL LENGTH mm (inches) 1.090 (46,85)/ 1.140 (44,88)	MUZZLE DIAMETER mm (inches) 15 (0,59)	AVERAGE WEIGHT kg (lbs) 3,3 (7,3)

ROVER  
ROVER LEFT HAND

CALIBRI	Passo di rigatura (inches)
243 Win. 270 Win. 308 Win. 30-06 Spring 7mm Rem. Mag 300 Win. Mag. 6,5x55 SE 7X64 8X57JS 9,3X62* 458 Win. Mag.**	10 10 12 10 9,5 10 8,5 8,5 9,5 14 14

NORMAL TRIGGER	TRIGGER WEIGHT gr (lbs) 1.100 (2,4)	MAGAZINE FIX 4	LENGTH OF PULL mm (inches) 365 (14,37)
BARREL LENGTH mm (inches) 560 (22)/ 610 (24) 650 (25,5)**	OVERALL LENGTH mm (inches) 1.090 (46,85)/ 1.140 (44,88) 1.180 (46,46)**	MUZZLE DIAMETER mm (inches) 15 (0,59) 17 (0,66) 19 (0,75)	AVERAGE WEIGHT kg (lbs) 3,3 (7,3)

Note: For the mod. ROVER M the cal. 243 Win. and 308 Win. are produced only with fix magazine



ROVER LEFT HAND



# ROVER THUMBHOLE/SYNTHETIC SYNTHETIC WOOD



ROVER THUMBHOLE

**ROVER THUMBHOLE**  
The Rover Thumbhole is a hunting bolt action rifle revisited with a new thumbhole stock in high resistance Nylon charged with fiber glass to increase resistance and rigidity. The stock was originally designed for instinctive shooting, but it has proven to be ideal for target shooting. The grip has been ergonomically designed to allow a very stable, yet natural hold.



ROVER SYNTHETIC

**ROVER SYNTHETIC / ROVER SYNTHETIC WOOD**  
Hunting bolt action rifles with synthetic stock in high resistance Nylon charged with fiber glass to increase resistance and rigidity. The wide front resting surface and the substantial cheek piece make the gun particularly suitable for challenging shooting situations. The "Rover Synthetic Wood" version comes with very appealing "wood grain" finish.



ROVER SYNTHETIC WOOD

CALIBRI	Passo di rigatura (inches)
222 Rem. •	12
223 Rem. •	12
243 Win.	10
270 Win.	10
308 Win.	12
30-06 Spring	10
7mm Rem. Mag	9,5
300 Win. Mag.	10
6,5x55 SE	8,5
7X64	8,5
8X57JS	9,5
9,3X62*	14
458 Win. Mag.**	14

NORMAL TRIGGER	TRIGGER WEIGHT gr (lbs) 1.100 (2,4)	• MAGAZINE DETACHABLE 3 FIX 4	LENGTH OF PULL mm (inches) 365 (14,37)
BARREL LENGTH mm (inches) 560 (22)/ 610 (24) 650 (25,5)**	OVERALL LENGTH mm (inches) 1.090 (46,85)/ 1.140 (44,88) 1.180 (46,46)**	MUZZLE DIAMETER mm (inches) 15 (0,59) 17 (0,66)* 19 (0,75)*	AVERAGE WEIGHT kg (lbs) 3,3 (7,3)



# COMPACT SCOUT/ROVER TRAQUEUR ROVER BATTUE



COMPACT SCOUT

COMPACT SCOUT

The COMPACT SCOUT is Sabatti “General Purpose” bolt action rifle. It comes standard with an innovative pistol grip stock design which guarantees perfect hold under any shooting condition. Although the stock was originally designed for precision target shooting, it has proven to be ideal for engaging moving targets at short distances. In other words, this is an extremely versatile stock capable of meeting a specific market need for the first time. The stock in extra light polymer comes with a fully adjustable cheek piece and a spacer to adjust LOP. It is very light, yet rigid and vibration absorbent. The rifle is provided with a 510mm long barrel with short rifling that stabilizes even the heaviest bullets. The standard version of this bolt action rifle comes with radial-style muzzle brake, thread cover and 7-round Accuracy International Compatible magazine in cal. 308 Win (a higher capacity magazine is standard with the cal. 30-06). The action is provided with 2-piece Picatinny base to fit a traditional scope. The adjustable rear and front sight with fiber optic insert allow faster acquisition of moving targets.



ROVER TRAQUEUR

ROVER TRAQUEUR

Compact bolt action rifle ideal for hunting in the thick of the woods. The synthetic stock features an orange blaze finish. The sight and rear folding sight come with optic fiber inserts for easier target acquisition in dimly lit areas. The swing swivel at the muzzle - where it is less likely to get caught in the bushes - can be rotated to three different pre-set positions for easy carry. It is also possible to add a rear swivel to the side of the stock for a more comfortable prolonged carry.



ROVER BATTUE

ROVER BATTUE

This compact and fast handling rifle specifically designed for driven hunting comes with a Thumbhole synthetic stock perfect for instinctive shooting. The “Battue”-type ramp rib allows faster moving target acquisition. A stock in anthracite-gray soft touch is also available on request.

COMPACT SCOUT

CALIBRI	Passo di rigatura (inches)	NORMAL TRIGGER	TRIGGER WEIGHT gr (lbs) (2,4)	MAGAZINE DETACHABLE 7	LENGTH OF PULL mm (inches) (14,57)
308 WIN 30-06 SPRING	8 8				
		BARREL LENGTH mm (inches) 510 (20)	OVERALL LENGTH mm (inches) 1.050 (41,34)	MUZZLE DIAMETER mm (inches) 17 (0,66)	AVERAGE WEIGHT kg (lbs) 3,4 (7,5)

ROVER TRAQUEUR  
ROVER BATTUE\*

CALIBRI	Passo di rigatura (inches)	NORMAL TRIGGER	TRIGGER WEIGHT gr (lbs) (2,4)	MAGAZINE FIX 3	LENGTH OF PULL mm (inches) (14,57)
7X64 8X57JS 9,3X62** 308 Win. 30-06 Spring 300 Win. Mag.	8,5 9,5 14 12 11 11				
		BARREL LENGTH mm (inches) 510 (20) 560 (22)* 610 (24)**	OVERALL LENGTH mm (inches) 1.030 (40,55) 1.090 (46,85)* 1.140 (44,88)**	MUZZLE DIAMETER mm (inches) 15 (0,59) 17 (0,66)**	AVERAGE WEIGHT kg (lbs) 3,2 (7,0)** 3,3 (7,3)



ADLER



**ADLER**  
The ADLER is an extra light over and under shotgun, with manual extractors, particularly suitable for walk up hunting. The action in “Ergal 55” light aluminum alloy is nickel-plated. This field OU shotgun can be ordered with either single trigger or double triggers.

CALIBERS	Chamber mm/inches	Barrel length mm/inches	Chokes	Average weight kg/lbs
12	76/3"	710/28"	3-1 - M-F	2,7/5,9
12	76/3"	710/28"	5 STR. - 5 CHOKES	2,7/5,9
12	76/3"	660/26"	4-3 - IC-M	2,6/5,7
12	76/3"	660/26"	5 STR. - 5 CHOKES	2,6/5,7
20	76/3"	660/26"	4-3 - IC-M	2,4/5,3
20	76/3"	660/26"	5 STR. - 5 CHOKES	2,4/5,3
28	70/2¾"	660/26"	4-3 - IC-M	2,5/5,5
28	70/2¾"	660/26"	5 STR. - 5 CHOKES	2,5/5,5
410	76/3"	660/26"	3-1 - M-F	2,5/5,5

FALCON



**FALCON**  
The FALCON is a hunting over and under shotgun with ejectors, double triggers and ventilated top rib. Single Selective Triggers are available in the Falcon EA Mon versions. The action, machined from a solid bar of Nickel-Chromium steel, is case hardened and tempered for resistance. The barrels in Chrome Molybdenum steel undergo a grinding, lapping and chrome-lining process for increased performance.

CALIBERS	Chamber mm/inches	Barrel length mm/inches	Chokes	Average weight kg/lbs
12	76/3"	710/28"	3-1 - M-F	3,1/6,8
12	76/3"	710/28"	4-2 - IC-M	3,1/6,8
12	76/3"	710/28"	4-3 - IC-M	3,0/6,6
20	76/3"	710/28"	3-1 - M-F	2,8/6,2
20	76/3"	710/28"	4-3 - IC-M	2,7/6,0



# SABA

## SABA

The SABA is a hunting side by side shotgun with enhanced Anson Deely-type mechanism. The action, hot forged from solid bars of high resistance steel and machined on sophisticated milling machines, is case hardened and tempered after engraving. The barrels in Chrome Molybdenum steel undergo a grinding, lapping and chrome-lining process for increased performance. The model SABA comes standard with manual extractors, pistol grip stock in select walnut and double triggers. English straight grip and single trigger are available on request. The SABA EA model comes standard with ejectors, while the SABA SLUG offers shorter barrels.

CALIBERS	Chamber mm/inches	Barrel length mm/inches	Chokes	Average weight kg/lbs
12	70/2¾"	710/28"	3-1 - M-F	3,0/6,6
12	70/2¾"	660/26"	4-2 - IC-IM	2,8/6,2
20	70/2¾"	710/28"	3-1 - M-F	2,8/6,2
20	70/2¾"	660/26"	4-2 - IC-IM	2,6/5,7
28	70/2¾"	710/28"	3-1 - M-F	2,6/5,7

# MINI RANGER

## MINI RANGER

The MINI RANGER is a very elegant and light small bore side by side shotgun. Its proportions have been thoroughly studied. Its carefully designed shapes are further enhanced by plenty of hand touches. The mechanism is a traditional Anson Deeley-type mechanism. The action, machined from a solid bar of Nickel-Chromium steel, is totally scaled down to a true .410 bore. The barrels in Chrome Molybdenum steel generate very uniform and compact shot patterns. The Mini Ranger comes standard with manual extractors, stock and beavertail forearm in select walnut, oil polished and hand checkered. Straight English stock or Pistol Grip stock are also available on request. Available single trigger or double triggers on request.

CALIBERS	Chamber mm /inches	Barrel length mm/inches	Chokes	Average weight kg/lbs
410	76/3"	660/26"	3-1 - M-F	2,3/5,0
410	76/3"	710/28"	3-1 - M-F	2,4/5,3



CANARDIER



CANARDIER

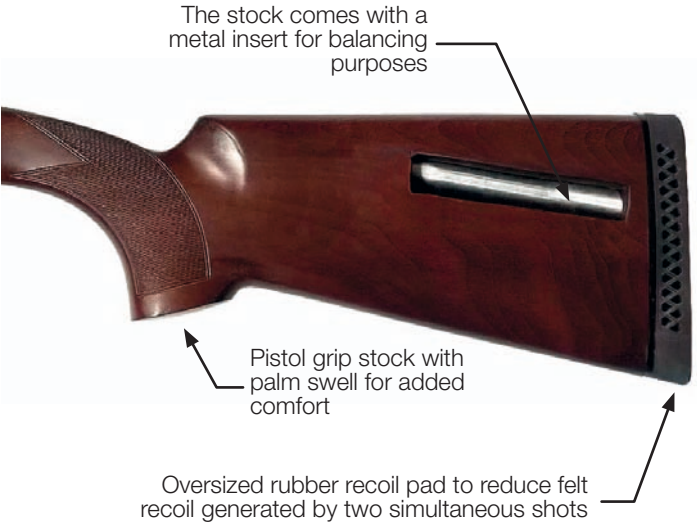
The CANARDIER is “the” side by side shotgun for duck hunting. It is built with an oversized mono-block and barrels with interchangeable choke tubes, for either lead or steel SHOT, whose shot patterns that do not overlap, but form a perfect “8” up to a distance of approximately 35 m.

The action is hot forged from a solid bar of high resistance steel and is subsequently machined on sophisticated milling machines. The Anson Deeley-type mechanism employed has been significantly enhanced. The top rib comes ready to fit a rail for red dot or a traditional scope.

The pistol grip stock and beavertail forearm for optimized grip are in select walnut, hand checkered and oil polished. The stock is oversized and comes with a metal balancer and a generous rubber pad to reduce perceived recoil from two shots fired at the same time.



CALIBERS	Chamber mm/inches	Barrel length mm/inches	Chokes	Average weight kg/lbs
12	89/3 1/2"	810/32"	5 CHOKES	5,1/11,2



- 1- By pulling the first trigger first, the first barrel only will fire. By pulling the second trigger after the first, the second barrel will fire.
- 2- By pulling the second trigger first, both barrels will fire simultaneously



# TRAP PRO - SPORTING PRO



TRAP PRO

TRAP PRO - SPORTING PRO

The TRAP PRO and SPORTING PRO over and under shotguns are designed for Trap and Sporting. The barrels made from bars of special Chrome Molybdenum steel undergo a grinding, lapping and chrome-lining process for increased performance. 5 extended choke tubes allow maximum flexibility on the shooting grounds. The fluorescent sight on the wide top rib facilitate aiming, even when shooting instinctively. The action is hot forged from a solid bar of high resistance steel and is subsequently machined on sophisticated milling machines to improve strength and durability. The stock and forearm feature the renown "Optowood" wood grain finish and oil polishing. The stock is adjustable for height and windage to fully fit each individual shooter. The soft rubber recoil reduces perceived recoil.



SPORTING PRO

CALIBERS	Chamber mm/inches	Barrel length mm/inches	Chokes	Average weight kg /lbs
12	70/2 ¾"	760/30"	5 CHOKES	3,5/7,7



Extended choke tubes

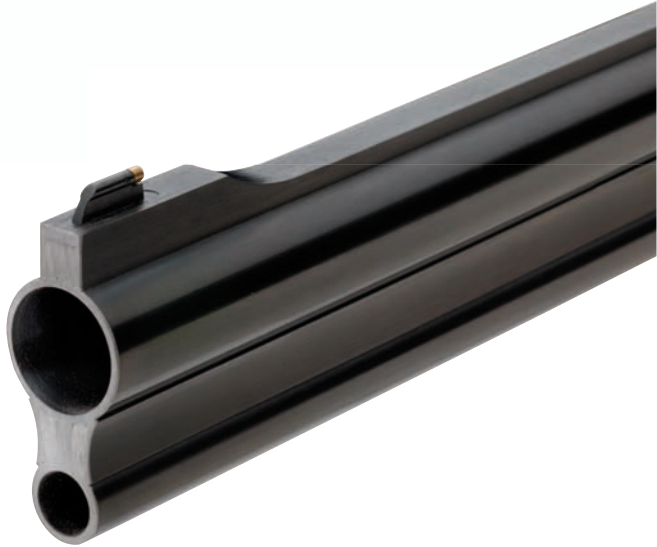


# FOREST - FOREST STE

## FOREST-FOREST STE

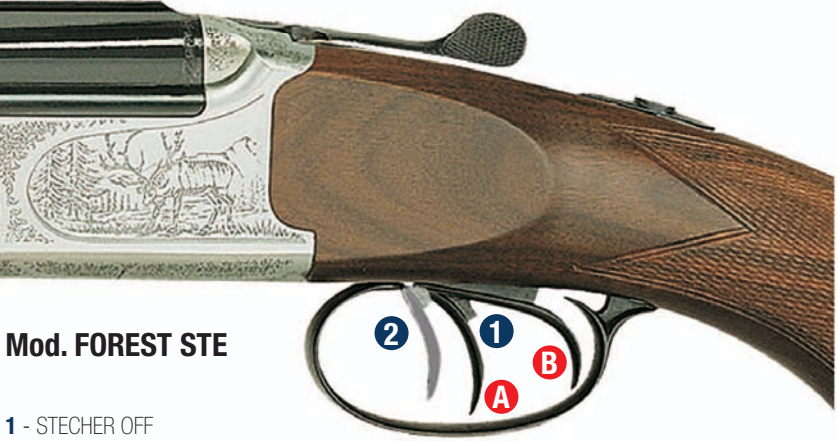
The FOREST and FOREST STE are hunting Rifle/Shotgun Combos with smooth-bore top barrel and rifled-bore bottom barrel. Both barrels are in Chrome Molybdenum steel; the lower rifle barrel is cold hammer forged for maximum accuracy. The action is hot forged from a solid bar of high resistance steel and is subsequently machined on sophisticated milling machines to improve strength and durability. The pistol grip stock and the beavertail forearm in select walnut are oil polished and hand checkered. The model FOREST comes with standard trigger. The model FOREST STE comes with Set Trigger for the rifle barrel.

CALIBERS	Chamber mm/inches	Barrel length mm/inches	Chokes	Average weight kg/lbs
SMOOTH BORE BARREL CAL. 12				
7x57R	76/3"	600/24"	3 - M	3,4/8,8
7x65R	76/3"	600/24"	3 - M	3,4/8,8
8x57JRS	76/3"	600/24"	3 - M	3,4/8,8
9,3x74R	76/3"	600/24"	3 - M	3,4/8,8
6,5x55SE	76/3"	600/24"	3 - M	3,4/8,8
30-06	76/3"	600/24"	3 - M	3,4/8,8
308 Win.	76/3"	600/24"	3 - M	3,4/8,8
SMOOTH BORE BARREL CAL. 20				
22 Hornet	76/3"	600/24"	3 - M	3,2/7,1
222 Rem.	76/3"	600/24"	3 - M	3,2/7,1



Mod. FOREST

A - TRIGGER FOR SMOOTH BORE BARREL  
B - TRIGGER FOR RIFLED BORE BARREL



Mod. FOREST STE

1 - STECHER OFF  
2 - STECHER ON  
A - TRIGGER FOR RIFLED BORE BARREL  
B - TRIGGER FOR SMOOTH BORE BARREL



# EXPRESS 190-195



EXPRESS 190

**EXPRESS 190-195**

The 190 (and 195) is an over and under double rifle built on an action entirely machined from a solid block of hot forged high resistance steel, subsequently machined on sophisticated milling machines to get the strength, reliability and accuracy needed for big game hunting.

The barrels in special molybdenum steel are cold hammer forged. The top rib comes with a rear sight and a front bead with fiber optic insert for improved aiming, even when shooting instinctively.

The stock and forearm in good quality walnut are oil polished and hand checkered.

The over and under double rifle comes standard with manual extractors.



EXPRESS 195

CALIBERS	Barrel length mm/inches	Average weight kg /lbs
7x65R	600/24"	3,3/7,2
8x57JRS	600/24"	3,3/7,2
9,3x74R	600/24"	3,3/7,2
30R Blaser	600/24"	3,3/7,2
30-06	600/24"	3,3/7,2
308 Win.	600/24"	3,3/7,2
45-70 Gov.	600/24"	3,3/7,2



CLASSIC 92



CLASSIC 92

The CLASSIC 92 is a side by side double rifle built on an action entirely machined from a solid block of hot forged high resistance steel and subsequently machined on sophisticated milling machines.  
The barrels in chrome molybdenum steel are cold hammer forged for improved ballistic performance and reliability.  
The top rib is dove tailed to fit the sighting device of your choice. Rears sights and front beads come with fiber optic inserts for improved aiming.  
The stock, cheek piece and beavertail forearm in select walnut are oil polished and hand checkered.  
The double rifle comes standard with extractors and double triggers. Single trigger is available on request.

CALIBERS	Barrel length mm/inches	Average weight kg/lbs
7x65R	600/24"	3,2/7,0
8x57JRS	600/24"	3,2/7,0
9,3x74R	600/24"	3,2/7,0
30R Blaser	600/24"	3,2/7,0
45-70 Gov.	600/24"	3,2/7,0



# SAFARI BIG FIVE

SAFARI BIG FIVE

The SAFARI BIG FIVE is a side by side double rifle designed for big game hunting. The action is oversized to get the extraordinary strength needed to resist the pressure generated by African big game calibers. The barrels in Chrome Molybdenum steel are cold hammer forged and hand regulated for improved accuracy and ballistic performance. The stock, cheek piece and beavertail forearm in select walnut are oil polished and hand checkered. The Safari Big Five comes standard with double triggers, extractor or ejectors. Single trigger is available on request.

CALIBERS	Barrel length mm/inches	Average weight kg/lbs
375 Flanged	600/24"	4,4/9,7
416 Rigby	600/24"	4,4/9,7
450/400 N.E.	600/24"	4,4/9,7
450 N.E.	600/24"	4,4/9,7
470 N.E.	600/24"	4,4/9,7
500 N.E.	600/24"	4,4/9,7



SAFARI BIG FIVE EDL

The exquisite laser engraving on the side plates of the BIG FIVE SAFARI EDL further enhance the beautiful lines of this side by side double rifle.







**Riccardo Ranzani with  
Sabatti STR Sport .308**

Three times 300 m Free Rifle  
3x40 Italian Champion  
(2017-2018-2019),

Twice 300 m Free Rifle Prone  
Italian Champion (2018-2019),

Three times 300 m Free Rifle 3x40  
National Record holder,

Free Rifle Prone  
National Record holder

## Accessories



For all accessories scan this QR Code

## Note

---

---

---

---

---

---

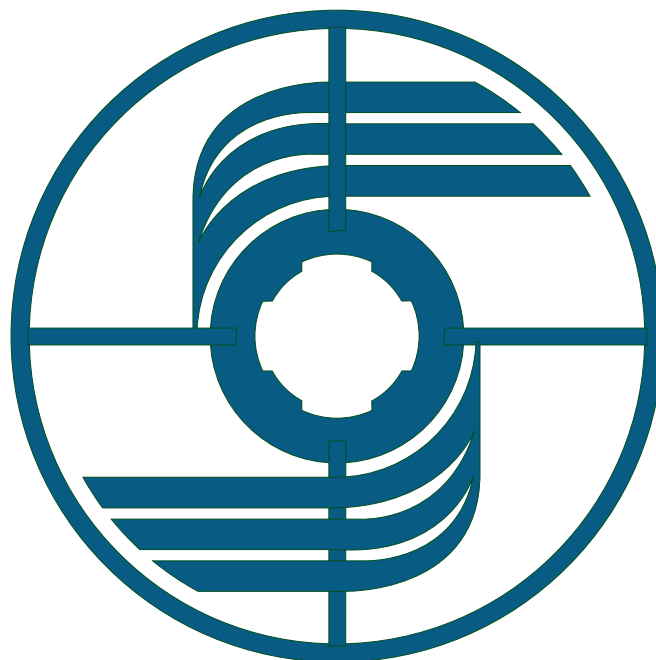
---

---

---

---







# Sabatti

**SABATTI S.p.a**

Via A. Volta, 90 • 25063 GARDONE VAL TROMPIA (Brescia) ITALY

TEL. +39.030.8912207 / +39.030.831312 • FAX +39.030.8912059 • [info@sabatti.it](mailto:info@sabatti.it) • [www.sabatti.it](http://www.sabatti.it)

Find out more about our news, follow us on  sabatti and  sabattiarmi